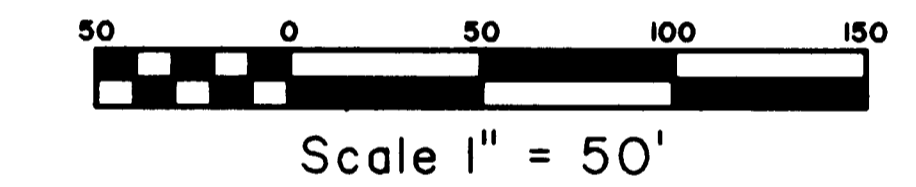
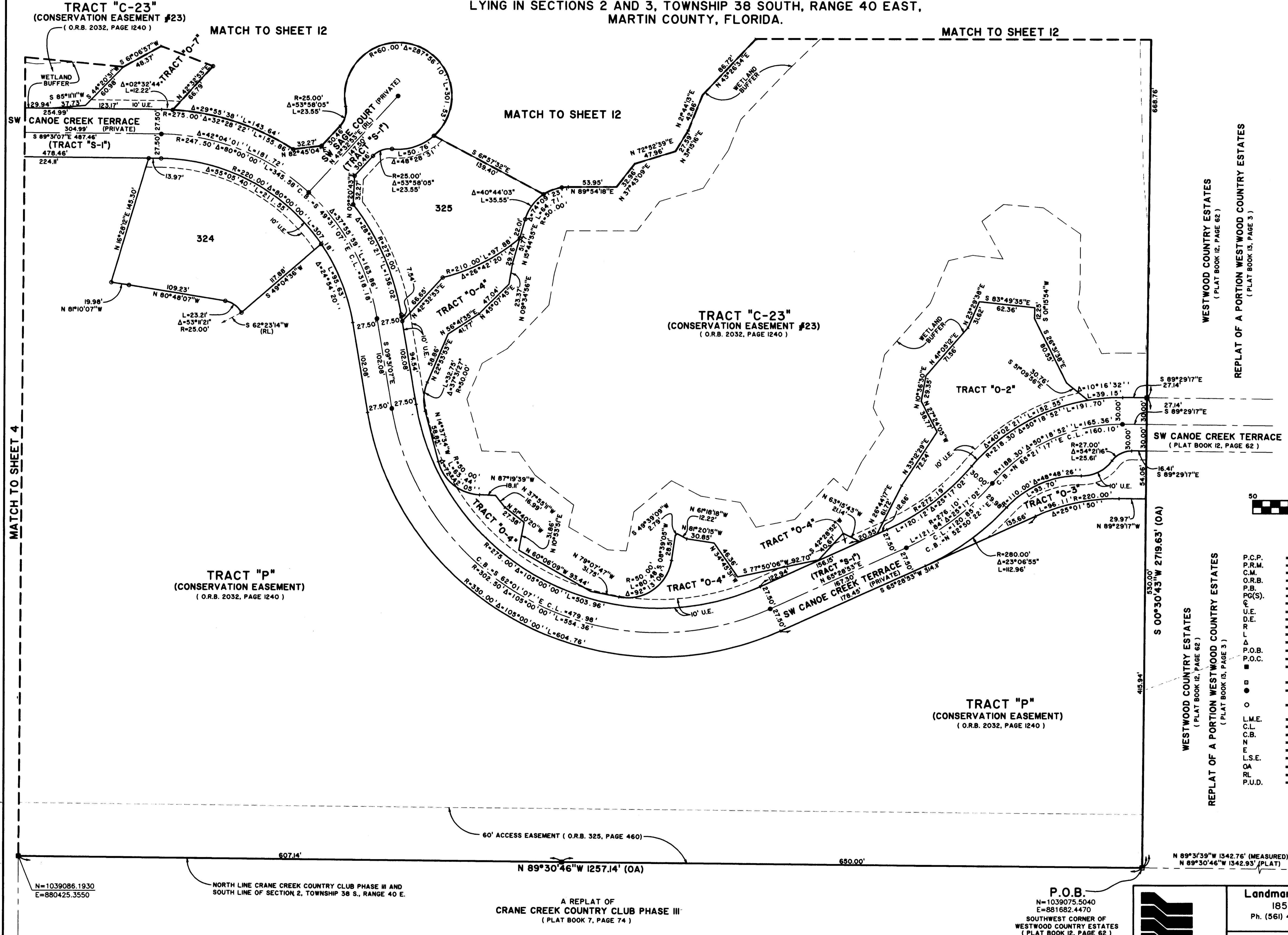
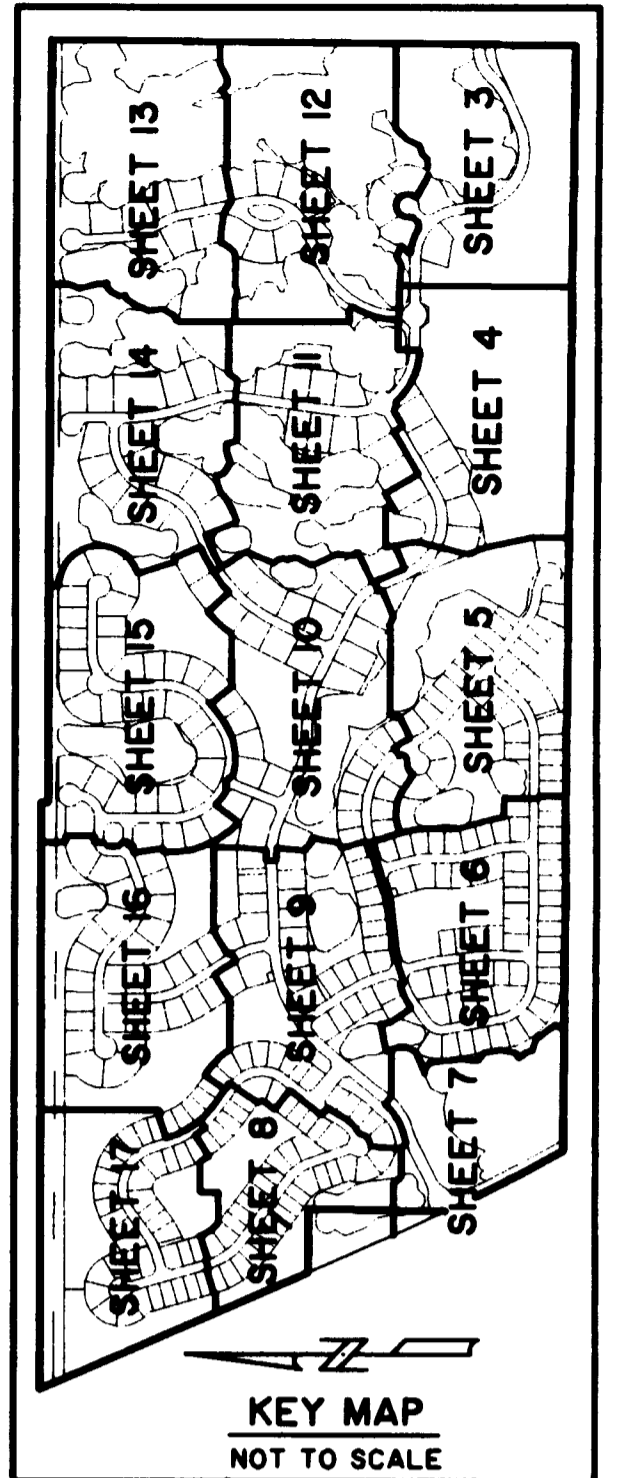


SAND TRAIL P.U.D.

LYING IN SECTIONS 2 AND 3, TOWNSHIP 38 SOUTH, RANGE 40 EAST,
MARTIN COUNTY, FLORIDA.



LEGEND

P.C.P.	PERMANENT CONTROL POINT
P.R.M.	PERMANENT REFERENCE MONUMENT
C.M.	CONCRETE MONUMENT
O.R.B.	OFFICIAL RECORD BOOK
P.B.	PLAT BOOK
PG(S)	PAGE(S)
C	CENTERLINE
U.E.	UTILITY EASEMENT
D.E.	DRAINAGE EASEMENT
R	RADIUS
ARC	ARC LENGTH
Δ	CURVE CENTRAL ANGLE
P.O.B.	POINT OF BEGINNING
P.O.C.	POINT OF COMMENCEMENT
■	SET 4"x4"x24" C.M. WITH ALUMINUM DISK, STAMPED P.R.M. L.B. 4396
●	FOUND 4"x4" C.M. (AS SHOWN)
■	SET NAIL AND ALUMINUM DISK, STAMPED P.C.P. LB 4396
○	SET 1/2"x18" IRON ROD WITH CAP, STAMPED LB 4396
L.M.E.	LAKE MAINTENANCE EASEMENT
C.L.	CHORD LENGTH
C.B.	CHORD BEARING
N	NORTHING
E	EASTING
L.S.E.	LIFT STATION EASEMENT
OA	OVERALL
RL	RADIAL LINE
P.U.D.	PLANNED UNIT DEVELOPMENT

FOUND 4"x4" C.M. WITH ROUND ALUMINUM DISK, STAMPED R.L.S. 1009 SE CORNER OF SECTION 2, TOWNSHIP 38 S, RANGE 40 E
N=1039064.430
E=883025.160
(FIELD POSITION)

SHEET 3 OF 17

Landmark Surveying & Mapping Inc.
1850 Forest Hill Boulevard
Ph. (561) 433-5405 Suite 100 W.P.B. Florida
LB # 4396

SAND TRAIL P.U.D.

NOTE: SEE SHEET 2 OF 17 FOR SURVEYOR'S NOTES

0: V.B. SPOTT (KPM113) \085\2632\0626_3 Mon Mar 05 15:52:41 2007 PLOTTED BY LESLIE C. BISHOPP